

1. Sail Size

Please indicate if measured
MAX or between Bands

P = Max Luff (measured from top of boom to max halyard hoist, or between Bands on mast) _____ MAX Bands

E = Max Foot (measured from back of mast to max outhaul setting, or to black band near aft end of boom) _____ MAX Bands

L = Leech (measured from main halyard max hoist to the top of Boom at max outhaul or to the black band) _____

BC = Backstay Clearance (measured from back of mast to Backstay at boom level) _____

2. Boom Measurements

A = Tack Back _____

B = Tack Up _____

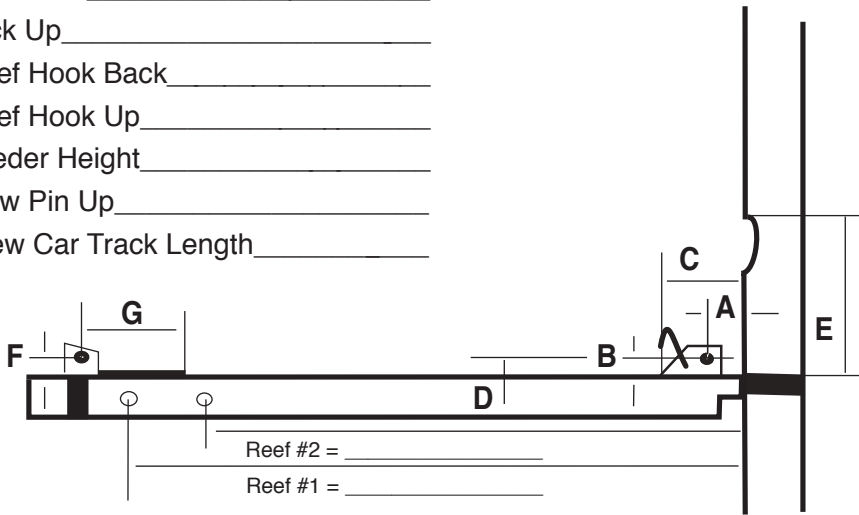
C = Reef Hook Back _____

D = Reef Hook Up _____

E = Feeder Height _____

F = Clew Pin Up _____

G = Clew Car Track Length _____



3. Reef Measurements

Reef Blocks on Boom: Yes No Reef #1 _____ Reef #2 _____

Boom End Exit: Yes No Jiffy/Slab Reefing: Yes No

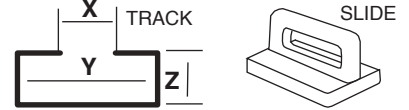
Single Line Reefing: Yes No Reef Hook(s) forward: Yes No

Customer: _____ Boat Type: _____

Sail # _____ Color: Check One: Blue Black Red Green Insignia: Yes No

4. Mast & Boom Styles

Internal Track

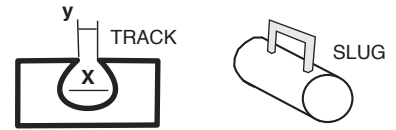


Mast X = _____ Boom X = _____

Y = _____ Y = _____

Z = _____ Z = _____

Internal Groove



Mast X = _____ Boom X = _____

Y = _____ Y = _____

External Track



Mast T = _____ Boom T = _____

NOTE:

If Mast has Luff Track/Slider System, Track System Identification Form is Required!

5. Mast Bend

Inches of Maximum mast bend at Midpoint between Gooseneck and Masthead:

Inches _____